

Euro-Flash V2 Install / Operating Guide

Congratulations on the purchase of your Euro-Flash V2 Software! After many months of testing and development, we are proud to officially release the software. Please use this guide to help you navigate the software. If you get stuck or have any questions, please email sales@eurocharged.com and one of our technical staff will assist.

Installation of the program

You should have received the following items in the package from us.

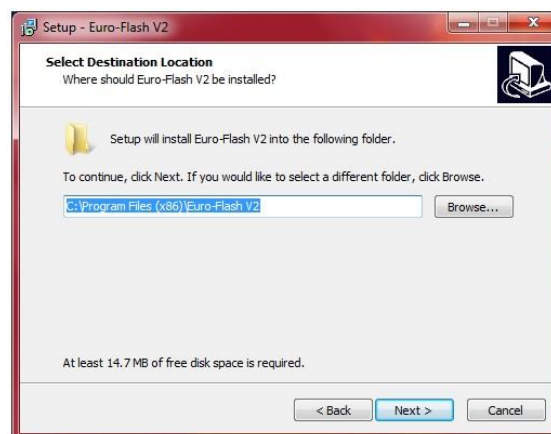
1. USB to OBDII Cable
2. USB Memory Stick
3. Carrying Case

Start by inserting the USB Memory Stick into your PC. After a few moments, an install program should launch. If it does not start on its own, please open the USB drive by going to My Computer and locating the corresponding drive.

You should see the following screen after clicking on the EuroFlashSetup.exe.



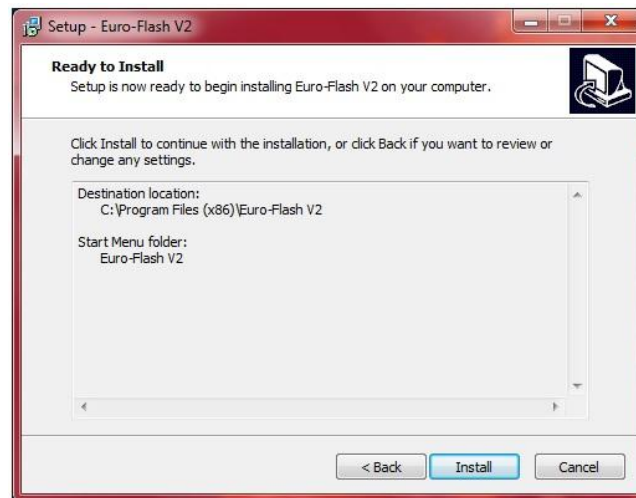
Click Next to begin the installation.



Click next to accept the default install location or click the Browse button to change the location.



Click next on the folder creation step. You should not change the name of the folder the application is stored in.

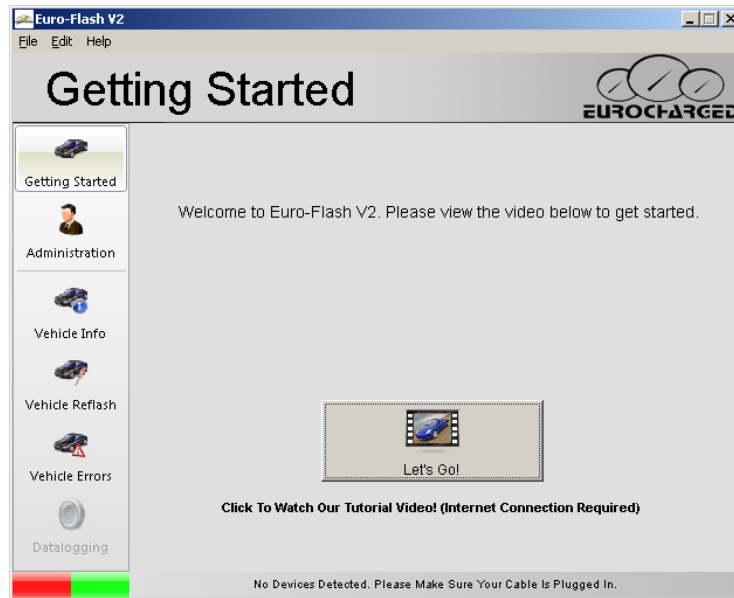


Click Install to start the copying of the files. Click the finish button when completed.



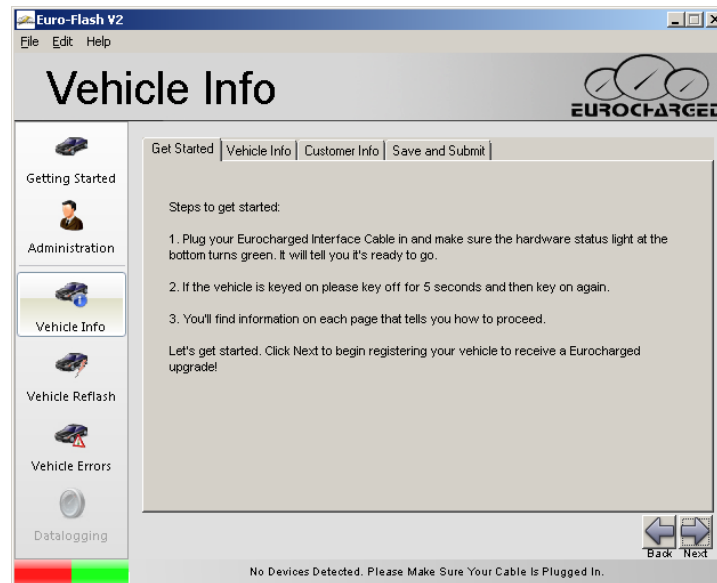
Using Euro-Flash V2

Double click the “Euro-Flash V2 Client” icon on your desktop. Once the program opens, you should see a screen similar to this.



Please feel free to take a moment and watch the Tutorial Video. You must be connected to the internet in order for the video to work properly.

To begin the tuning process, click on “Vehicle Info” and read the “Steps to get started” section.



Next, click on the “Vehicle Info” tab at the top. At this point your USB to OBDII cable should be plugged in to the PC and the status section at the bottom should read “Eurocharged Interface Cable Detected. Ready To Upgrade”.

Now, you can plug the USB to OBDII cable into your vehicles OBDII port and turn the key to position 2. When in position 2, all of the vehicles dash lights would be illuminated.



Click the "Connect" button at the bottom. You should get information similar to this screen.

Euro-Flash V2
File Edit Help

Vehicle Info

EUROCHARGED

Get Started | **Vehicle Info** | Customer Info | Save and Submit

Getting Started
Administration
Vehicle Info
Vehicle Reflash
Vehicle Errors
Datalogging

Calibration Data

Hardware Number:	Software Number:	Other:
<input type="text" value="0281B05159"/>	<input type="text" value="0000000000"/>	<input type="text" value="01/178.5556"/>

Vehicle Identification Number

VIN:

Click Next once you've hit connect and retrieved your vehicle's information.

Back Next

No Devices Detected. Please Make Sure Your Cable Is Plugged In.

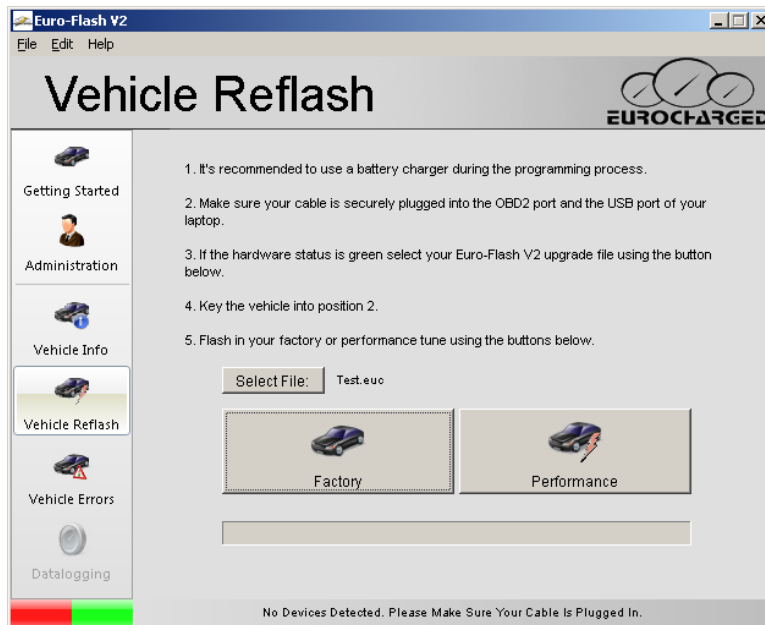
Next, click on the "Customer Info" tab. Please fill in your name, order or invoice number, and all of the vehicle mods. There is even a box for any special requests you might have.

After you have filled in all of the information, click on the "Save and Submit" tab.

Click the "Save" button and save the file in a safe spot on your PC. The .eui file will then need to be emailed to sales@eurocharged.com for processing. Please include any information that we might need to process your files. Please allow up to 24 hours for processing.

Vehicle Programming

You are ready to reflash the vehicle once you have received back your .euc file from Eurocharged. The .euc file contains the factory tune (stock file) and the Eurocharged tune. In some cases you might receive more than one .euc file, depending on your file requests.



Start by clicking the "Select File" button. Browse to the .euc that Eurocharged sent to you. You should have saved this file on your pc in an easy accessible location.

*****IMPORTANT INFORMATION*****

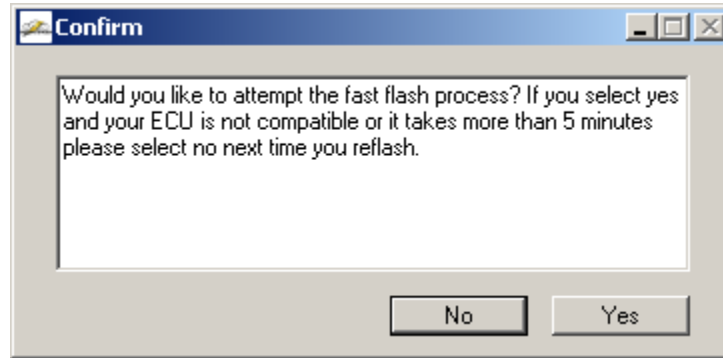
Please note that flashing your ECU will use a huge amount of battery voltage. It is recommended that you connect your vehicle to a stabilized power supply. If one is not available, you may disconnect the radiator fan, turn off your AC, and turn off any other electronic consumables.

*****IMPORTANT INFORMATION*****

Turn your key to position 2 and make sure the OBDII cable is plugged into the PC and to the vehicles OBDII port.

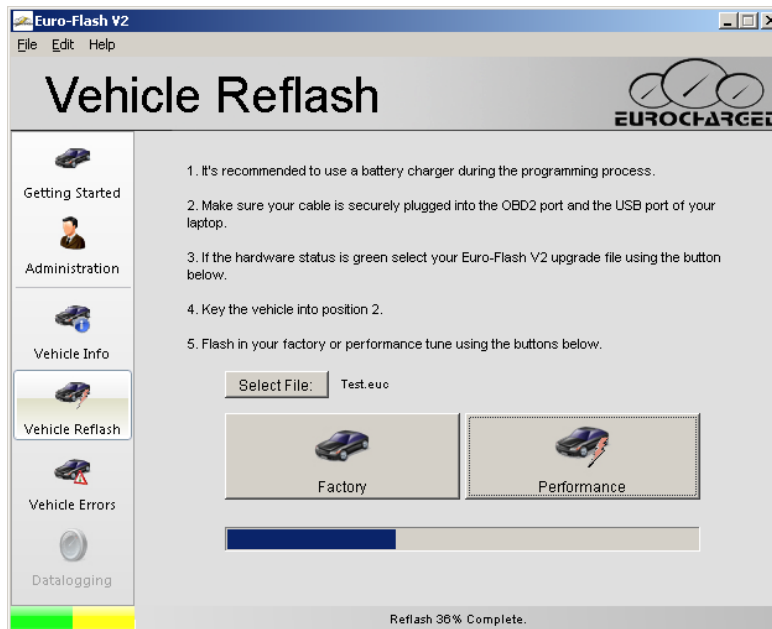
Click the button that corresponds to the tune that you want to load. "Factory" will load the stock program. "Performance" will load the Eurocharged program.

After clicking one of the above buttons, you might be asked to choose between high speed and low speed flashing. Choose the High Speed option and note the time it takes to complete the flash. If it takes more than 10 minutes, then the next time you flash the vehicle you will need to select Low Speed.



Once the flash process has started, please refrain from touching the key, radio, AC, or anything in the car that might change the battery voltage.

There will be a progress bar that will update during the flash process. Please keep an eye on the progress bar for more information.



Once the programming is complete, turn the key off and wait at least 5 seconds before starting your vehicle. That's it! The vehicle has now been reprogrammed!